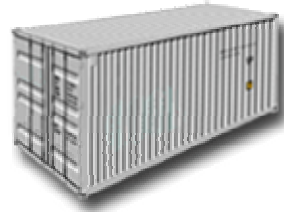


## General Purpose

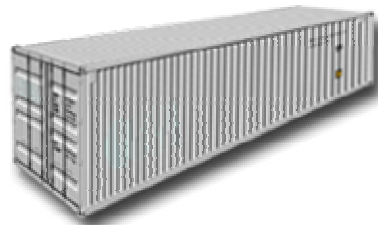
These containers are offered in 20 ft and 40 ft. Manufactured from either Aluminium or steel, they are suitable for most types of cargo. Aluminium containers have a slightly larger payload than steel, and steel containers have a slightly larger internal cube.

**20' x 8' x 8'6"**



		<b>Steel</b>	
		<b>Millimetres</b>	<b>Feet</b>
<b>Internal Dimensions</b>	<b>Length</b>	5.898	19'4,2"
	<b>Width</b>	2.352	7'8,6"
	<b>Height</b>	2.391	7'10"
<b>Door Opening</b>	<b>Width</b>	2.340	7'8"
	<b>Height</b>	2.280	7'5,8"
		<b>Kilograms</b>	<b>Pounds</b>
<b>Weight</b>	<b>Max Gross</b>	24.000	52.910
	<b>Tare</b>	2.280	5.090
	<b>Max Payload</b>	21.720	47.885
		<b>Cube Metres</b>	<b>Cube Feet</b>
<b>Internal Capacity</b>		33,2	1.171

**40' x 8' x 8'6"**



		<b>Steel</b>		<b>Aluminium</b>	
		<b>Millimetres</b>	<b>Feet</b>	<b>Millimetres</b>	<b>Feet</b>
<b>Internal Dimensions</b>	<b>Length</b>	12,040	39'5,3"	12.021	39'5,3"
	<b>Width</b>	2,353	7'8,5"	2.335	7'8,9"
	<b>Height</b>	2,383	7'9,7"	2.360	7'8,9"
<b>Door Opening</b>	<b>Width</b>	2,340	7'8"	2.337	7'7,9"
	<b>Height</b>	2,280	7'5,8"	2.271	7'5,4"
		<b>Kilograms</b>	<b>Pounds</b>	<b>Kilograms</b>	<b>Pounds</b>
<b>Weight</b>	<b>Max Gross</b>	30.480	67.200	32.000	70.040
	<b>Tare</b>	3.830	8.450	3.170	6.990
	<b>Max Payload</b>	26.650	58.630	28.830	63.500
		<b>Cube Metres</b>	<b>Cube Feet</b>	<b>Cube Metres</b>	<b>Cube Feet</b>
<b>Internal Capacity</b>		67,7	2.390	67,7	2.380

## Flatracks

Flatracks are especially suited to heavy loads or cargo that needs loading from the top or sides, such as pipes and machinery. They are offered collapsible and non-collapsible with or without walls. Manufactured from steel, flatrack containers come in 20 ft and 40 ft sizes.

**20' x 8' x 8'6"**



		<b>Steel</b>	
		<b>Millimetres</b>	<b>Feet</b>
<b>Internal Dimensions</b>	<b>Length</b>	5.727	18'9,4"
	<b>Width</b>	2.240	7'4,1"
	<b>Height (Unfolded)</b>	2.170	7'1,3"
	<b>Height (Folded)</b>	420	1'4,6"
<b>Weight</b>	<b>Max Gross</b>	30.480	66.140
	<b>Tare</b>	2.950	6.500
	<b>Max Payload</b>	26.650	60.690
<b>Internal Capacity</b>	<b>Cube Metres</b>	27,9	<b>Cube Feet</b> 986

**40' x 8' x 8'6"**



		<b>Steel</b>	
		<b>Millimetres</b>	<b>Feet</b>
<b>Internal Dimensions</b>	<b>Length</b>	12.024	39'5,6"
	<b>Width</b>	2.240	7'4,1"
	<b>Height (Unfolded)</b>	2.034	6'8,1"
	<b>Height (Folded)</b>	570	1'10,4"
<b>Weight</b>	<b>Max Gross</b>	45.000	98.180
	<b>Tare</b>	5.530	12.190
	<b>Max Payload</b>	39.470	87.020
<b>Internal Capacity</b>	<b>Cube Metres</b>	54,8	<b>Cube Feet</b> 1.936

## High Cube

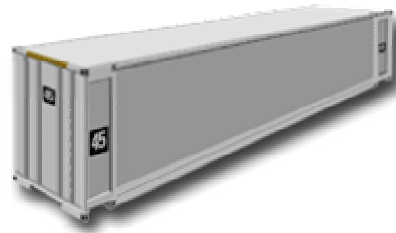
With high cube containers, you gain an extra foot in height compared with general-purpose containers. Ideal for light, voluminous cargo or bulky cargo. These extra volume containers come in 40 ft and 45 ft sizes in steel and aluminium.

**40' x 8' x 9'6"**



		<b>Steel</b>	
		<b>Millimetres</b>	<b>Feet</b>
<b>Internal Dimensions</b>	<b>Length</b>	12.031	39'5,6"
	<b>Width</b>	2.352	7'8,5"
	<b>Height</b>	2.698	8'10"
<b>Door Opening</b>	<b>Width</b>	2.340	7'8,1"
	<b>Height</b>	2.585	8'5,8"
		<b>Kilograms</b>	<b>Pounds</b>
<b>Weight</b>	<b>Max Gross</b>	30.480	67.200
	<b>Tare</b>	3.980	8.755
	<b>Max Payload</b>	26.500	58.425
		<b>Cube Metres</b>	<b>Cube Feet</b>
<b>Internal Capacity</b>		76,3	2.694

**45' x 8' x 9'6"**

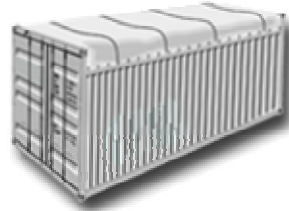


		<b>Steel</b>		<b>Aluminium</b>	
		<b>Millimetres</b>	<b>Feet</b>	<b>Millimetres</b>	<b>Feet</b>
<b>Internal Dimensions</b>	<b>Length</b>	13.544	44'5,2"	13.583	44'6,7"
	<b>Width</b>	2.352	7'8,5"	2.345	7'8,3"
	<b>Height</b>	2.698	8'10"	2.687	8'9,7"
<b>Door Opening</b>	<b>Width</b>	2.340	7'8,1"	2.343	7'8,2"
	<b>Height</b>	2.585	8'5,8"	2.585	8'5,8"
		<b>Kilograms</b>	<b>Pounds</b>	<b>Kilograms</b>	<b>Pounds</b>
<b>Weight</b>	<b>Max Gross</b>	30.480	67.200	30.480	67.200
	<b>Tare</b>	4.800	10.580	3.980	8.780
	<b>Max Payload</b>	25.680	56.614	26.500	58.420
		<b>Cube Metres</b>	<b>Cube Feet</b>	<b>Cube Metres</b>	<b>Cube Feet</b>
<b>Internal Capacity</b>		86	3.040	85,6	3.023

## Open Top

Allowing cargo to be loaded from the top, open top containers are particularly suitable for bulky cargo such as machinery. They are fitted with a PVC tarpaulin cover and attachable bows with cable sealing devices. The container doors can be removed to make the stuffing of cargo more convenient. Manufactured from steel, open top containers come in 20 ft and 40 ft sizes

**20' x 8' x 8'6"**



		Steel		Steel	
		Millimetres	Feet	Millimetres	Feet
<b>Internal Dimensions</b>	<b>Length</b>	5.902	19'4,3"	5.887	19'3,7"
	<b>Width</b>	2.240	7'4,1"	2.350	7'7,7"
	<b>Height</b>	2.352	7'8,5"	2.330	7'7,7"
<b>Door Opening</b>	<b>Width</b>	2.335	7'7,9"	2.338	7'8"
	<b>Height</b>	2.240	7'4,1"	2.223	7'3,5"
		Kilograms	Pounds	Kilograms	Pounds
<b>Weight</b>	<b>Max Gross</b>	24.000	52.910	24.000	52.910
	<b>Tare</b>	2.440	5.380	2.560	5.640
	<b>Max Payload</b>	21.560	47.520	21.440	47.270
		Cube Metres	Cube Feet	Cube Metres	Cube Feet
<b>Internal Capacity</b>		32	1.133	32,2	1.138

**40' x 8' x 8'6"**



		Steel	
		Millimetres	Feet
<b>Internal Dimensions</b>	<b>Length</b>	12.021	39'5,2"
	<b>Width</b>	2.350	7'8,4"
	<b>Height</b>	2.234	7'7,7"
<b>Door Opening</b>	<b>Width</b>	2.338	7'8"
	<b>Height</b>	2.234	7'3,8"
		Kilograms	Pounds
<b>Weight</b>	<b>Max Gross</b>	36.000	79.370
	<b>Tare</b>	4.430	9.760
	<b>Max Payload</b>	31.570	69.600
		Cube Metres	Cube Feet
<b>Internal Capacity</b>		66,7	2.355

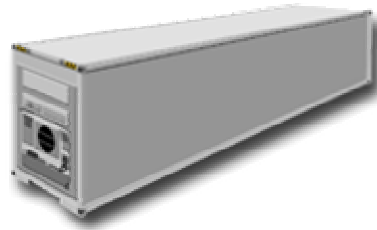
# Refrigerated

20' x 8' x 8'6"



		<b>Aluminium</b>	
		<b>Millimetres</b>	<b>Feet</b>
<b>Internal Dimensions</b>	<b>Length</b>	5.455	17'11"
	<b>Width</b>	2.294	7'6,2"
	<b>Height (Nominal)</b>	2.288	7'6"
	<b>Height (Usable)</b>	2.188	7'2"
<b>Door Opening</b>	<b>Width</b>	2.268	7'5,3"
	<b>Height</b>	2.215	7'3,1"
		<b>Kilograms</b>	<b>Pounds</b>
<b>Weight</b>	<b>Max 34,000Gross</b>	24.000	52.800
	<b>Tare</b>	2.950	6.503
	<b>Max Payload</b>	21.050	46.407
		<b>Cube Metres</b>	<b>Cube Feet</b>
<b>Internal Capacity</b>	<b>Nominal</b>	28,6	1.010
	<b>Usable</b>	27,4	967
		<b>MGSS</b>	
		<b>Millimetres</b>	<b>Feet</b>
<b>Internal Dimensions</b>	<b>Length</b>	5.461	17'11,2"
	<b>Width</b>	2.290	7'6"
	<b>Height (Nominal)</b>	2.288	7'6"
	<b>Height (Usable)</b>	2.288	7'6"
<b>Door Opening</b>	<b>Width</b>	2.294	7'6,2"
	<b>Height</b>	2.278	7'5,5"
		<b>Kilograms</b>	<b>Pounds</b>
<b>Weight</b>	<b>Max 34,000Gross</b>	30.480	67.200
	<b>Tare</b>	3.190	7.033
	<b>Max Payload</b>	27.290	60.167
		<b>Cube Metres</b>	<b>Cube Feet</b>
<b>Internal Capacity</b>	<b>Nominal</b>	28,6	1.010
	<b>Usable</b>	27,3	967

40' x 8' x 9'6''



		<b>Aluminium</b>	
		<b>Millimetres</b>	<b>Feet</b>
<b>Internal Dimensions</b>	<b>Length</b>	11.569	37'11,4"
	<b>Width</b>	2.294	7'6,2"
	<b>Height (Nominal)</b>	2.540	8'4"
<b>Door Opening</b>	<b>Height (Usable)</b>	2.440	8'
	<b>Width</b>	2.294	7'6,2"
	<b>Height</b>	2.558	8'4,7"
		<b>Kilograms</b>	<b>Pounds</b>
<b>Weight (Max Gross Weight 34 Tonne)</b>	<b>Max Gross</b>	34.000	74.961
	<b>Tare</b>	4.430	9.767
	<b>Max Payload</b>	29.570	65.194
<b>Weight (Max Gross Weight 30 Tonne)</b>	<b>Max Gross</b>	30.480	67.200
	<b>Tare</b>	4.420	9.750
	<b>Max Payload</b>	26.060	57.450
		<b>Cube Metres</b>	<b>Cube Feet</b>
<b>Internal Capacity</b>	<b>Nominal</b>	67,4	2.380
	<b>Usable</b>	64,8	2.289
		<b>MGSS</b>	
		<b>Millimetres</b>	<b>Feet</b>
<b>Internal Dimensions</b>	<b>Length</b>	11.559	37'11"
	<b>Width</b>	2.290	7'6"
	<b>Height (Nominal)</b>	2.546	8'4,2"
<b>Door Opening</b>	<b>Height (Usable)</b>	2.446	8'0,2"
	<b>Width</b>	2.294	7'6,2"
	<b>Height</b>	2.558	8'4,7"
		<b>Kilograms</b>	<b>Pounds</b>
<b>Weight</b>	<b>Max 34,000Gross</b>	32.000	70.551
	<b>Tare</b>	4.545	10.020
	<b>Max Payload</b>	27.455	60.531
		<b>Cube Metres</b>	<b>Cube Feet</b>
<b>Internal Capacity</b>	<b>Nominal</b>	67,4	2.380
	<b>Usable</b>	64,8	2.298