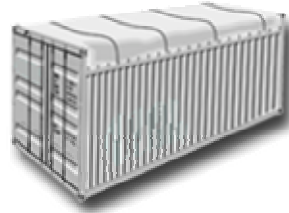


## Open Top

Allowing cargo to be loaded from the top, open top containers are particularly suitable for bulky cargo such as machinery. They are fitted with a PVC tarpaulin cover and attachable bows with cable sealing devices. The container doors can be removed to make the stuffing of cargo more convenient. Manufactured from steel, open top containers come in 20 ft and 40 ft sizes

**20' x 8' x 8'6"**



		Steel		Steel	
		Millimetres	Feet	Millimetres	Feet
<b>Internal Dimensions</b>	<b>Length</b>	5.902	19'4,3"	5.887	19'3,7"
	<b>Width</b>	2.240	7'4,1"	2.350	7'7,7"
	<b>Height</b>	2.352	7'8,5"	2.330	7'7,7"
<b>Door Opening</b>	<b>Width</b>	2.335	7'7,9"	2.338	7'8"
	<b>Height</b>	2.240	7'4,1"	2.223	7'3,5"
		Kilograms	Pounds	Kilograms	Pounds
<b>Weight</b>	<b>Max Gross</b>	24.000	52.910	24.000	52.910
	<b>Tare</b>	2.440	5.380	2.560	5.640
	<b>Max Payload</b>	21.560	47.520	21.440	47.270
		Cube Metres	Cube Feet	Cube Metres	Cube Feet
<b>Internal Capacity</b>		32	1.133	32,2	1.138

**40' x 8' x 8'6"**



		Steel	
		Millimetres	Feet
<b>Internal Dimensions</b>	<b>Length</b>	12.021	39'5,2"
	<b>Width</b>	2.350	7'8,4"
	<b>Height</b>	2.234	7'7,7"
<b>Door Opening</b>	<b>Width</b>	2.338	7'8"
	<b>Height</b>	2.234	7'3,8"
		Kilograms	Pounds
<b>Weight</b>	<b>Max Gross</b>	36.000	79.370
	<b>Tare</b>	4.430	9.760
	<b>Max Payload</b>	31.570	69.600
		Cube Metres	Cube Feet
<b>Internal Capacity</b>		66,7	2.355